

# Encore FR Pro Color



Light Efficiency:

7 Lumen/Watt

Light Quality:

CRI: 92.5

Color Temperature:

6785 K

Output: 2984 lm

Peak: 89659 cd

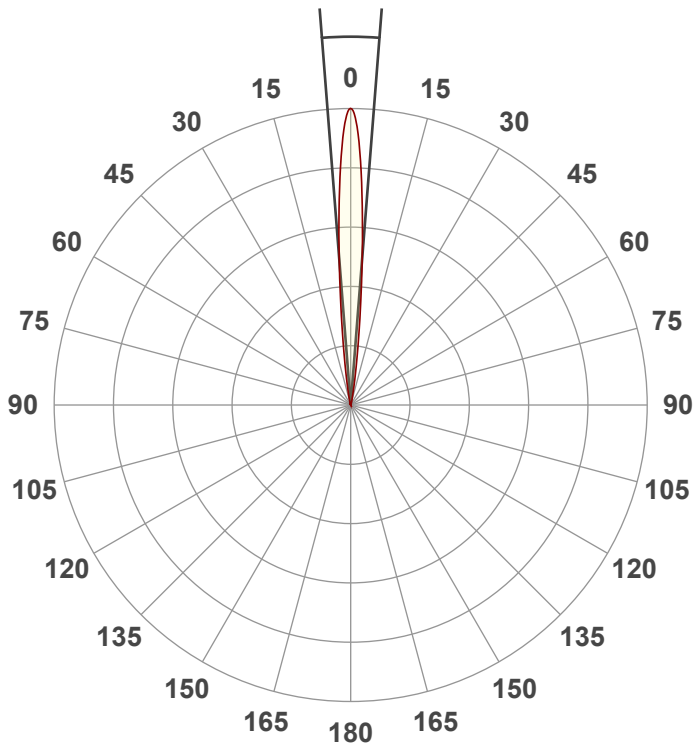
Power: 412 W

PF: 1.0



Beam Angle

9°



Test:

Full On Zoom In

Date:

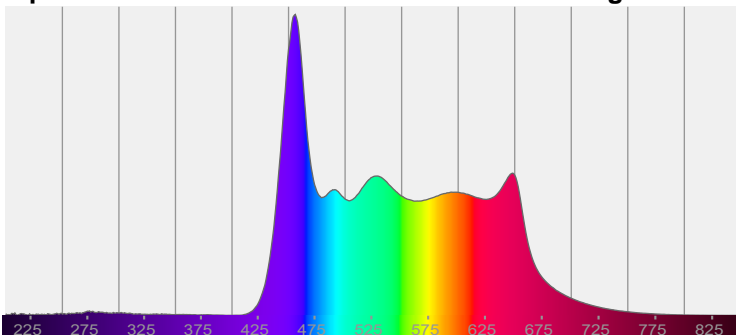
3/16/2022

Note:

CIE 1931  
x: 0.311  
y: 0.310

Spectra

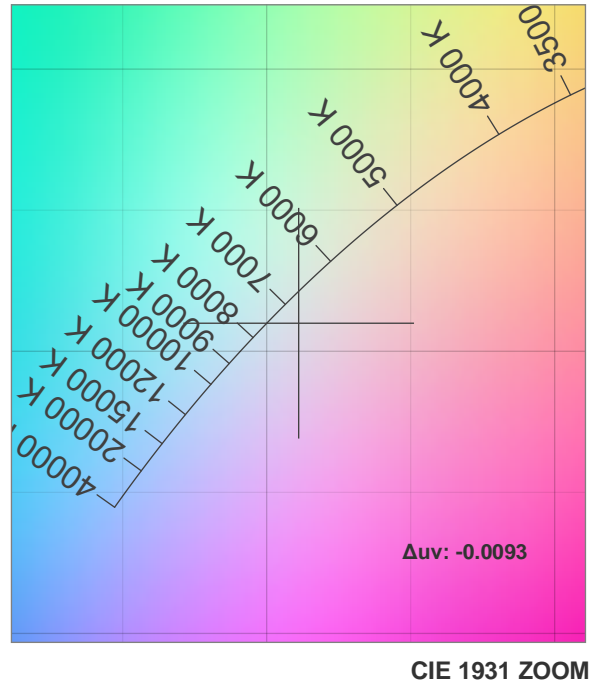
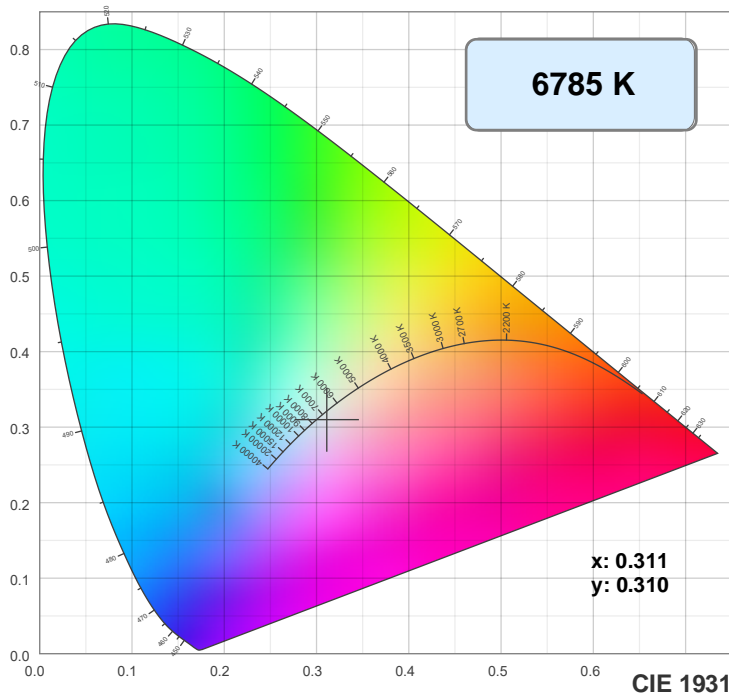
Dominant Wavelength: 360nm



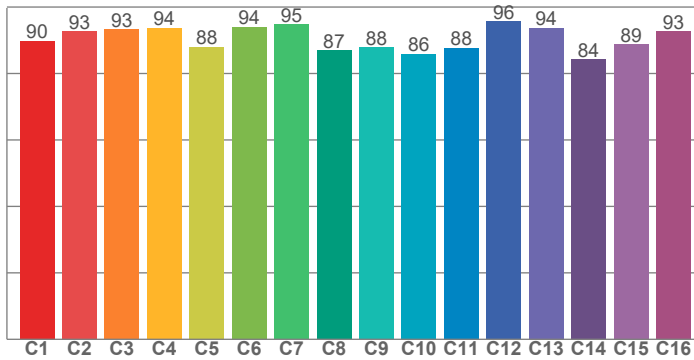
Power

Voltage: 118 V  
Current: 3.49 A  
Frequency: 0 Hz

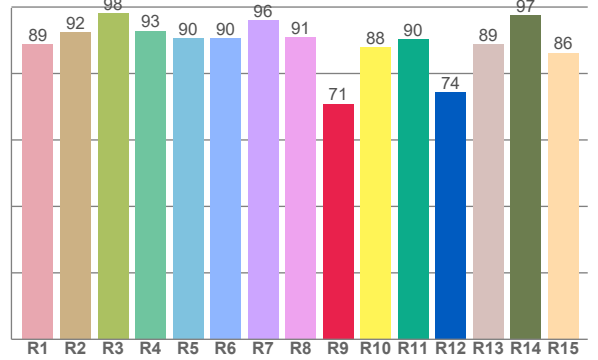
## Color Details



TM30: 90.6



CRI: 92.5 (R1-R8)



CRI R values, only R1-R8 are used to calculate final CRI value

R1	R2	R3	R4	R5	R6	R7	R8	R9	R10	R11	R12	R13	R14	R15
88.7	92.5	98.0	92.9	90.5	90.5	95.9	91.0	70.9	87.8	90.3	74.4	88.9	97.4	86.2

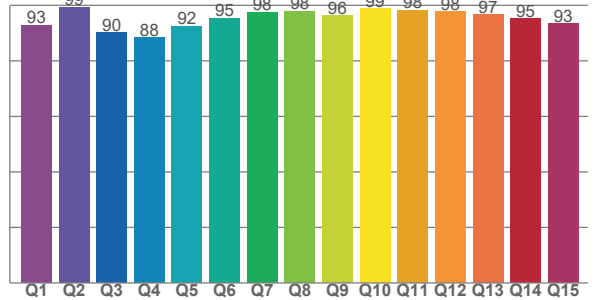
TM30 C values, 16 binned values out of total of 99 C values

C1	C2	C3	C4	C5	C6	C7	C8	C9	C10	C11	C12	C13	C14	C15	C16
89.9	92.7	93.2	93.7	88.0	94.0	94.7	86.9	87.8	86.0	87.7	95.6	93.7	84.3	88.8	92.7

CQS Q values

Q1	Q2	Q3	Q4	Q5	Q6	Q7	Q8	Q9	Q10	Q11	Q12	Q13	Q14	Q15
92.8	99.3	90.1	88.4	92.4	95.4	97.6	97.9	96.2	98.7	98.3	97.8	96.6	95.2	93.3

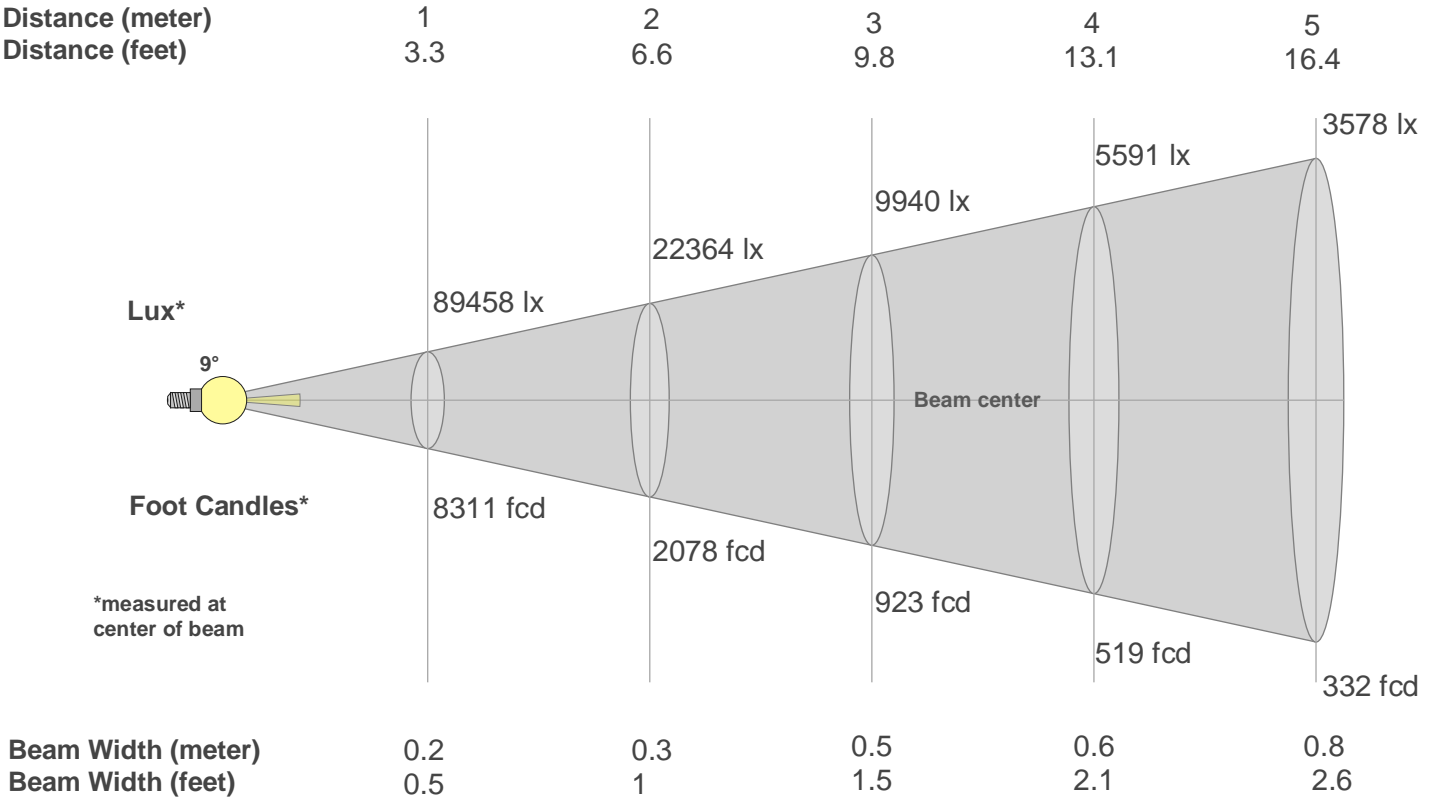
CQS: 94.4



## Color Parameters

Color Temperature	Color Rendering Index	Red Component	Color Fidelity	Color Gamut	Color Quality Scale	Color Coordinate CIE 1931	Color Coordinate CIE 1931	Color Coordinate	Color Coordinate	Color Deviation from Black Body
CCT	CRI	CRI R9	TM30 Rf	TM30 Rg	CQS	x	y	u	v	$\Delta uv$
6785 K	92.5	70.9	90.6	102.0	94.4	0.311	0.310	0.204	0.305	-0.0093

Beam Details



Lux\*

9°

Foot Candles\*

\*measured at center of beam

89458 lx

22364 lx

9940 lx

5591 lx

3578 lx

8311 fcd

2078 fcd

923 fcd

519 fcd

332 fcd

Beam center

Beam Width (meter)

Beam Width (feet)

0.2

0.5

0.3

1

0.5

1.5

0.6

2.1

0.8

2.6

Beam Intensities from 1-20m																				
m	1	2	3	4	5	6	7	8	9	10	11	12	13	14	15	16	17	18	19	20
ft	3.3	6.6	9.8	13.1	16.4	19.7	23	26.2	29.5	32.8	36.1	39.4	42.7	45.9	49.2	52.5	55.8	59.1	62.3	65.6
lx	89458	22364	9940	5591	3578	2485	1826	1398	1104	895	739	621	529	456	398	349	310	276	248	224
fcd	8310.9	2077.7	923.4	519.4	332.4	230.9	169.6	129.9	102.6	83.1	68.7	57.7	49.2	42.4	36.9	32.5	28.8	25.7	23	20.8

Intensities in 0° C-plane																			
0°	1°	2°	3°	4°	5°	6°	7°	8°	9°	10°	11°	12°	13°	14°	15°	16°	17°	18°	19°
89.5K	86.3K	77.5K	65.1K	51.4K	38.3K	27.2K	18.6K	12.4K	8.2K	5.4K	3.7K	2.6K	1.9K	1.4K	1.1K	0.9K	0.8K	0.6K	0.5K
100%	96%	87%	73%	57%	43%	30%	21%	14%	9%	6%	4%	3%	2%	2%	1%	1%	1%	1%	1%

Intensities in 90° C-plane																			
0°	1°	2°	3°	4°	5°	6°	7°	8°	9°	10°	11°	12°	13°	14°	15°	16°	17°	18°	19°
89.5K	86.3K	77.5K	65.1K	51.4K	38.3K	27.2K	18.6K	12.4K	8.2K	5.4K	3.7K	2.6K	1.9K	1.4K	1.1K	0.9K	0.8K	0.6K	0.5K
100%	96%	87%	73%	57%	43%	30%	21%	14%	9%	6%	4%	3%	2%	2%	1%	1%	1%	1%	1%

Intensities in 180° C-plane																			
0°	1°	2°	3°	4°	5°	6°	7°	8°	9°	10°	11°	12°	13°	14°	15°	16°	17°	18°	19°
89.5K	86.3K	77.5K	65.0K	51.3K	38.4K	27.3K	18.8K	12.6K	8.4K	5.6K	3.7K	2.6K	1.8K	1.3K	1.0K	0.8K	0.6K	0.5K	0.4K
100%	96%	87%	73%	57%	43%	31%	21%	14%	9%	6%	4%	3%	2%	1%	1%	1%	1%	1%	0%

Intensities in 270° C-plane																			
0°	1°	2°	3°	4°	5°	6°	7°	8°	9°	10°	11°	12°	13°	14°	15°	16°	17°	18°	19°
89.5K	86.3K	77.5K	65.0K	51.3K	38.4K	27.3K	18.8K	12.6K	8.4K	5.6K	3.7K	2.6K	1.8K	1.3K	1.0K	0.8K	0.6K	0.5K	0.4K
100%	96%	87%	73%	57%	43%	31%	21%	14%	9%	6%	4%	3%	2%	1%	1%	1%	1%	1%	0%

Beam Angle 50%	Field Angle 10%	Cutoff Angle 2,5%	Intensity Ratio in 120° Cone	Intensity Ratio in 90° Cone
9°	17.6°	24.7°	100.0%	100.0%